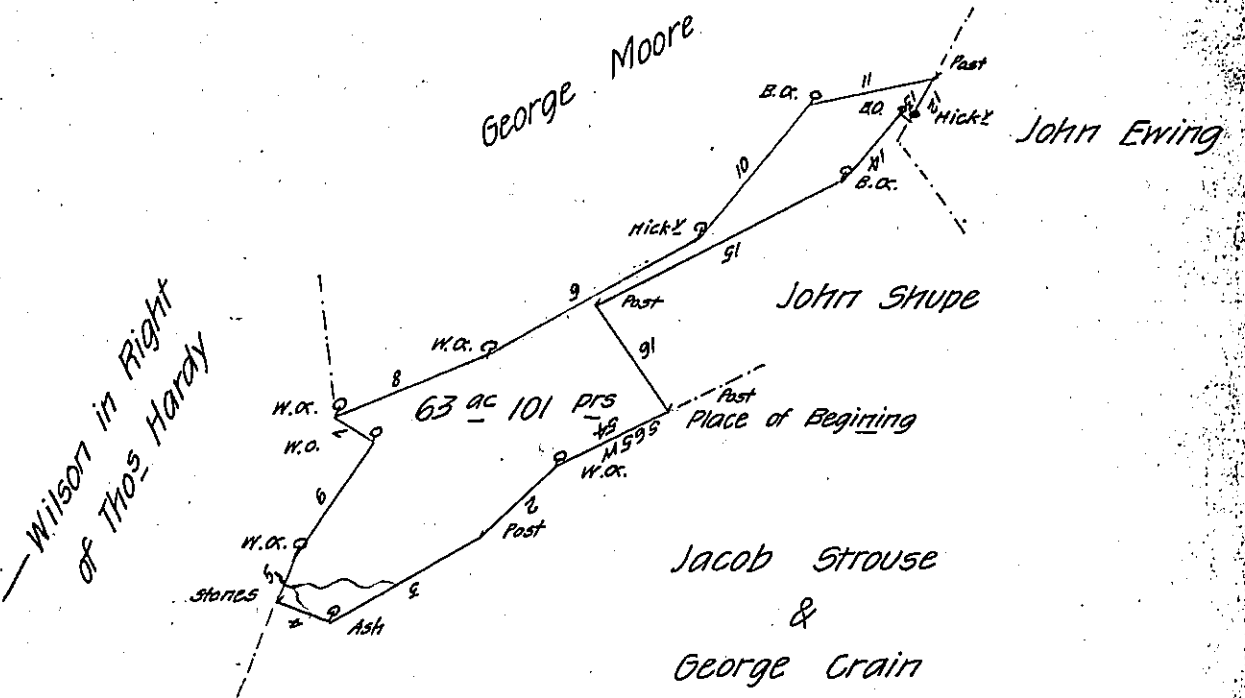


Beginning at Post
Course & Distance

- 1 S 65 W 54 a W.O.
 - 2 S 50 W 44 a post
 - 3 S 64 W 73 an Ash
 - 4 N 65 W 23 Stones
 - 5 N 22 E 15 a W.O.
 - 6 N 36 E 62 a W.O.
 - 7 N 53 W 19 a W.O.
 - 8 N 70 E 69 a W.O.
 - 9 N 63 E 106 a HickY
 - 10 N 42 1/2 E 75 a B.O.
 - 11 N 80 1/2 E 54 a post
 - 12 S 32 1/2 W 20 1/2 a HickY
 - 13 N 28 W 4 1/4 a B.O.
 - 14 S 50 W 41 a B.O.
 - 15 S 65 W 121 a Post
 - 16 S 35 E 5 1/2 a Post
- The Place of Beginning



*Draught of a Tract of Land situate in Milford Township Mifflin County containing Sixty three acres and 101 perches and the allowance of Six Pr. Cent for Roads &c. Survey'd the 9th day of March 1801 for Thomas H. Stuart in pursu-
ance of a Warrant dated the 8th day of November 1800*

Pr

William Harris D.S.

To Samuel Cochran Esquire

Surv^r Gen^l of Pennsylvania

IN TESTIMONY that the above is a copy of the original remaining on file in the Department of Internal Affairs of Pennsylvania, made conformably to an Act of Assembly approved the 16th day of February 1833, I have hereunto set my hand and caused the Seal of said Department to be affixed at Harrisburg, this eighteenth day of January 1907

James D. Brown
Secretary of Internal Affairs.